

**WINATEQ300 SOFTWARE**  
Version 1.3x



**[www.ateq.com](http://www.ateq.com)**

## AVERTISSEMENTS

This document and the software which is provided with it are the exclusive property of **ATEQ**.

The **Winatq300** software may only be used on one computer. However, the operator is authorised to make a single safety back-up, all other copies regardless of method are prohibited.

Lending, loaning, reproduction, even partial, diffusion to a third party, as well as all program modifications are not allowed without the expressed written consent of **ATEQ**.

The information contained within this document is supplied purely for information purposes and can be changed at any time without need for prior consultation or warning.

---

---

## REVISIONS OF THE WINATEQ300 USER MANUAL

---

*Due to continuing improvements, the information contained in this user manual, the features and design of this device are subject to be changed without prior notice.*

<b><u>Edition/Revision</u></b>	<b><u>Reference</u></b>	<b><u>Date</u> Week/Year</b>	<b><u>Chapters up dating</u></b>
First edition	UM-Winateq300Fa-U	10/2010	
Second edition	UM-Winateq300b-U	07/2016	Update to the software version 1.27.
Third edition	UM-Winateq300c-U	44/2016	Update to the software version 1.3x.



# TABLE OF CONTENTS

## Chapter 1 INTRODUCTION AND INSTALLATION

<b>1. GENERAL PRESENTATION .....</b>	<b>3</b>
<b>2. PRESENTATION OF THE SYSTEM .....</b>	<b>4</b>
2.1. Computer configuration .....	4
2.2. Setup diagram .....	4
<b>3. LICENSE .....</b>	<b>5</b>
<b>4. PROGRAM INSTALLATION .....</b>	<b>6</b>
4.1. Protection .....	6
4.2. Installation procedure .....	6
4.3. USB drivers Installation .....	8
4.3.1. Windows® XP Installation .....	8

## Chapter 2 NETWORKS AND GENERAL MANAGEMENT

<b>1. GENERAL MANAGEMENT MENUS .....</b>	<b>11</b>
1.1. Top menu .....	11
1.2. Display options .....	12
1.3. State bar .....	12
1.4. Bottom banner .....	12
<b>2. GENERAL TAB .....</b>	<b>13</b>
2.1. Options .....	13
2.1.1. Options / Parameters .....	14
2.2. Networks management .....	16
2.2.1. Connections configuration .....	16
2.2.2. USB/RS232 connection .....	16
2.2.3. Ethernet connection (LAN) .....	17
2.3. Communication check .....	18
2.4. Rename .....	18
<b>3. "CYCLE" TAB .....</b>	<b>19</b>
3.1. Start cycle .....	21

## Chapter 3 TESTS PARAMETERS MANAGEMENT

<b>1. "PARAMETERS" TAB .....</b>	<b>23</b>
1.1. Window details .....	24
1.2. Parameters modification .....	25
<b>2. AVAILABLE COMMANDS DETAIL .....</b>	<b>26</b>

## Chapter 4 RESULTS MANAGEMENT

<b>1. PRESENTATION .....</b>	<b>27</b>
1.1. "Results" tab .....	27
1.1.1. Results management .....	28
1.2. "Graphs" tab .....	29
1.2.1. Display management .....	29
1.2.2. Curves option .....	30
1.2.1. Tolerance curves .....	31
1.2.2. Archiving management .....	34
1.3. "Statistics" tab .....	35
1.3.1. "Counters" tab .....	35
1.3.2. "Distribution" tab .....	35
1.1. "Storage" tab .....	36
1.1. "Journal" tab .....	37

<b>Appendicies</b>	<b>KEYBOARD SHORTCUTS</b>
<b>Index</b>	<b>41</b>

## Chapter 1

# INTRODUCTION AND INSTALLATION

### 1. GENERAL PRESENTATION

**Winateq300** is a software PC which allows managing **ATEQ** instruments through a Computer of PC type.

The functions are:

- Managing the network.
- Parameters editing.
- Displaying and archiving measurement results.
- Network service.
- Displaying the sensors curves.
- Editing the statistics.

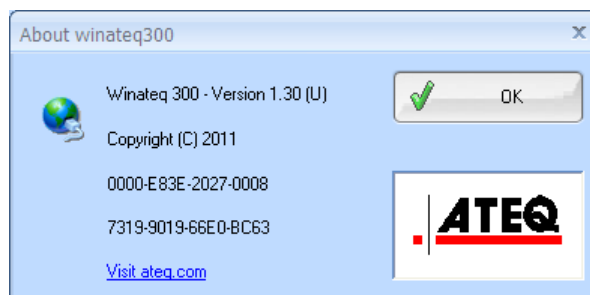
**Winateq300** can manage until 128 test parameters programs. This maximum number depends of the connected device.

**Important note:** **Winateq300** is an interface between the PC and the **ATEQ** device; it can only work if a device is connected. The offline operation is impossible, managing files, programs or other testing can not be performed until a device is not connected.

The installed program version is visible under the menu: "?/About Winateq".



The following window appears (following version):



## 2. PRESENTATION OF THE SYSTEM

### 2.1. COMPUTER CONFIGURATION

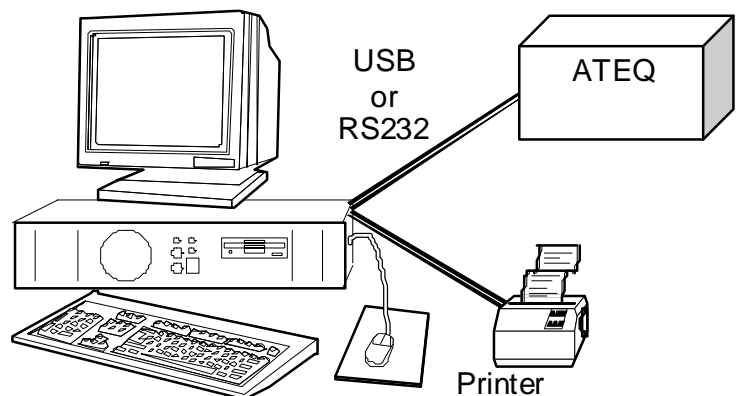
The control hub consists of a group of series 5 instruments managed by a PC, whose minimum required configuration is:

- Operator System : Windows© XP, Seven, 8, 8.1.
- CPU : Pentium (1 GHz) mini.
- RAM : 512 Mo.
- Available hard disk space : 500 Mo (*no storage*), 10 Go (with storage).
- Video card : VGA minimum.
- Screen : 14".
- Minimum screen resolution : 1024 x 768.
- Communication ports : RS232, USB or Ethernet.

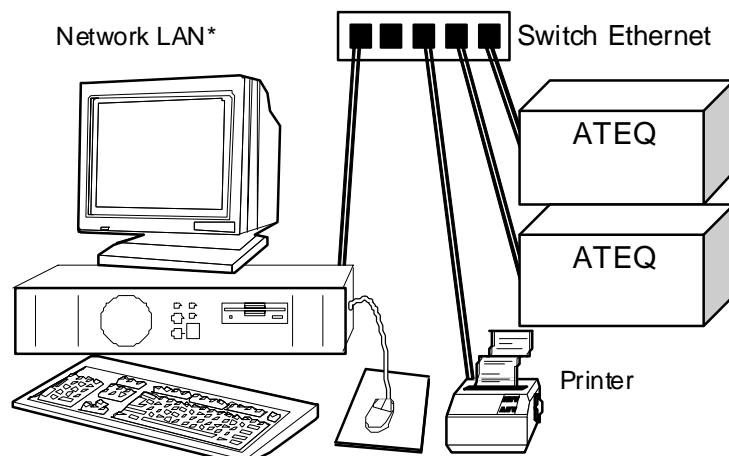
### 2.2. SETUP DIAGRAM

#### USB connection:

The device is plugged on the USB port.



#### Ethernet connection:



One or several devices are plugged on a "**Switch**" with their respective Ethernet ports. The devices can run without a PC connected to the network.

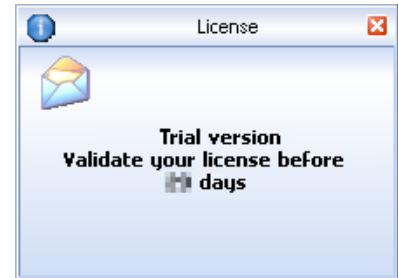
\* LAN = Local area Network

**Note:** this software runs only with ATEQ devices.

### 3. LICENSE

When **Winateq300** is installed on one computer for the first time, you obtain a trial version for 30 days.

During the trial version, the opposite message is regularly appearing on the left bottom of the screen, to remind to validate the version.



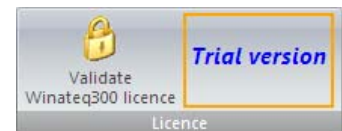
When the trial version is over, 30 days trial and 15 more days and if the license is not validated, the software won't save the data, Graphs, and all files are not created (DFD, DFX, DFQ, TXT and CSV).

To use indefinitely **Winateq300**, you have to acquire a license number.

This license will be delivered as a key, which is a 16 alphanumeric characters code.

This key is only available on the computer which is installed **Winateq300**, in case of uninstall from the first computer to install it on second one; you have to get a new key.

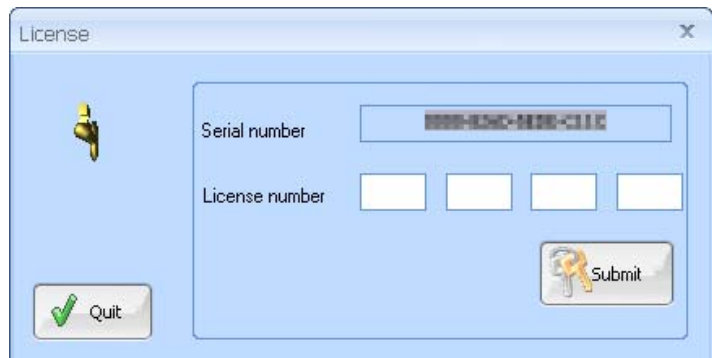
To get the key, click on the "Validate the Winateq300 license".




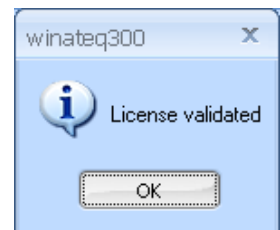
The "License" window appears.

Tell to **ATEQ**, company the serial number displayed in the "Serial number" field.

**ATEQ** will return you the associated license number to copy in the "License number" field.



Then press the  key, the definitive use is validated, the "Validated License" message appears.



In case of wrong capture of the serial number or if the number doesn't correspond to the computer, the "Invalide license number!" message is displayed.



## 4. PROGRAM INSTALLATION

The **Winateq300** software is delivered in a **CDROM** format.

### Warning:

**The operator may only use the WINATEQ program on one computer.**

**However, a backup copy is tolerated. All other copies, and in particular their transmission to a third party are strictly banned.**

**The lending, renting or modifying of the program is strictly forbidden.**

### 4.1. PROTECTION

The **WINATEQ** software is protected with a locking key that is installed the **USB** port of the computer.

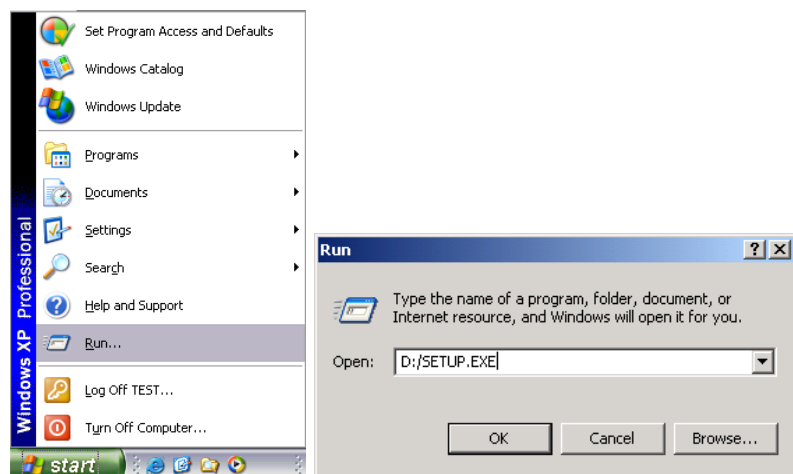
The drivers' installation is done manually. When the locking key is connected to the **USB** port **Windows**® detects it and ask for the drivers installation. All it has to do is following the process displayed on the screen. For **Windows**® **XP**, **USB** drivers are required.

**Note:** the drivers required for the **USB** locking key are available on the **Winateq300 CDROM** under the "**ACTIKEY/USB**" directory. This directory is indicated when **Windows**® asks the drivers path.

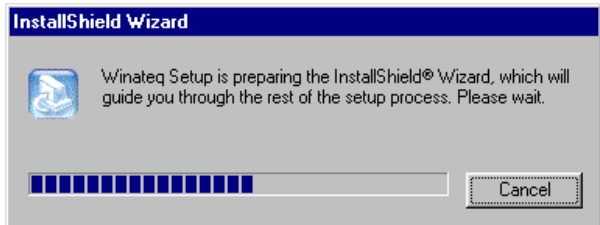
### 4.2. INSTALLATION PROCEDURE

**Winateq300** installation (example with **Windows**® **XP**):

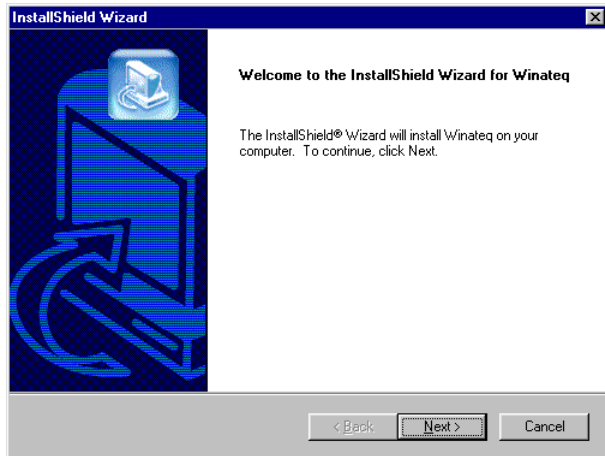
- Close all active programs.
- Insert the **CDROM** into the computer's CD drive.
- The reading and installation should start automatically.
- If the application does not launch of its own accord, activate the **START** button, then **RUN**.
- In the **OPEN** zone, type **D:\SETUP.EXE** (if necessary, replace **D** with the appropriate drive letter). Then validate.
- It is also possible to click on "**BROWSE**" to load the required element.



- When the program is launched, follow the instructions displayed.

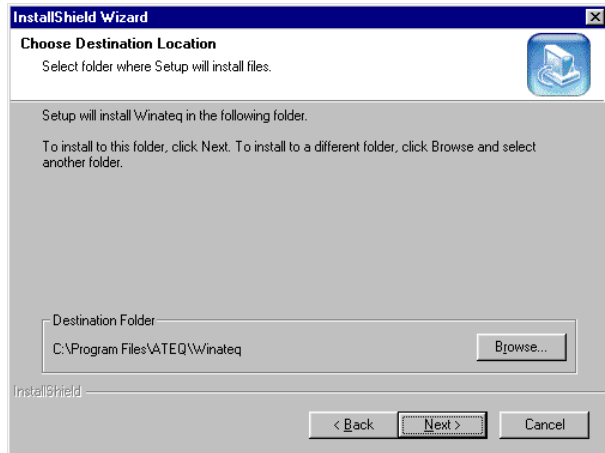


- To continue and confirm the installation, click on **Next >**.

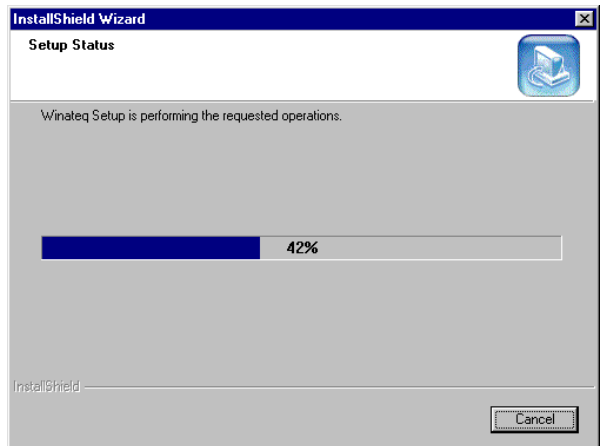



- Confirm the destination folder of the **Winateq300** software installation.

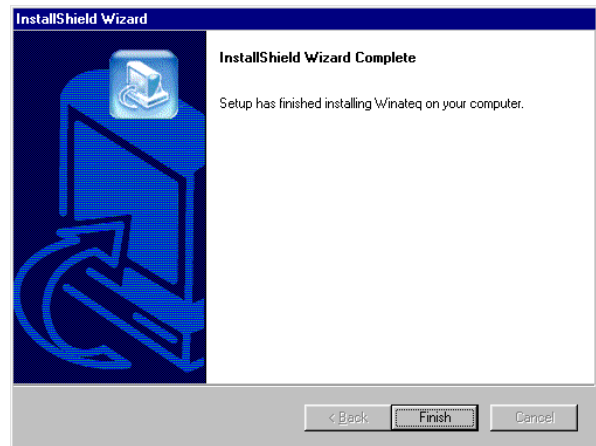
*Note: The default destination requires no changes.*



- The following window displays the level of completion of the installation which can be stopped at any time.



- When the installation is completed, press on the  button to exit the installation mode.



It is not necessary to restart the computer; **Winateq300** is installed and ready to run.

### 4.3. USB DRIVERS INSTALLATION

#### 4.3.1. Windows© XP Installation

- 1) Start the installation software: **USB\_VIRTUAL\_232\_XP.EXE**.
- 2) Click on "**Next >**".
- 3) The "**Serial emulation port**" drivers are installing.
- 4) Click on "**Finish**".

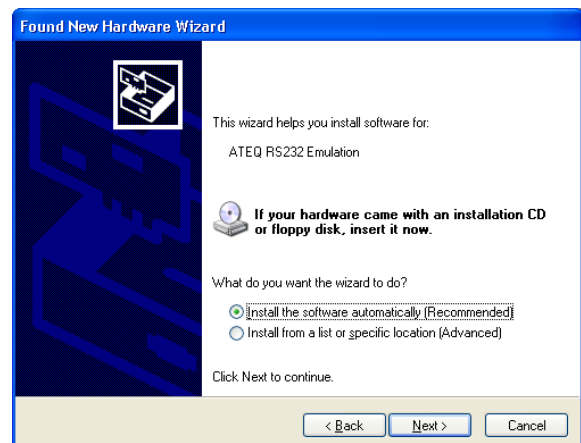
5) Connect the USB wire on the USB port of your PC and on the **ATEQ** device.

6) Switch on the **ATEQ** device.

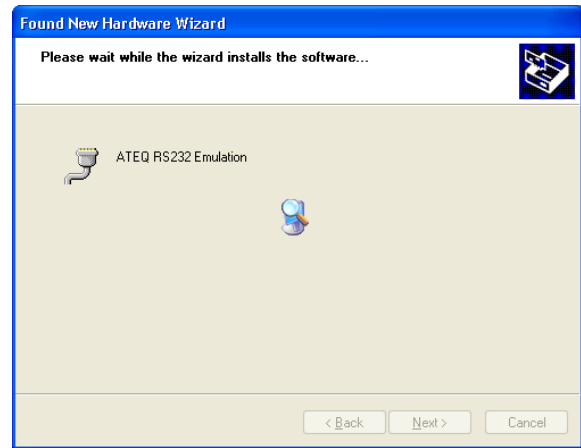
7) When the **ATEQ** device is detected, its installation begins. The opposite window appears select "**No, not this time**" and click on "**Next >**".



8) Select the "**Install the software automatically (recommended)**" option and click on "**Next >**".



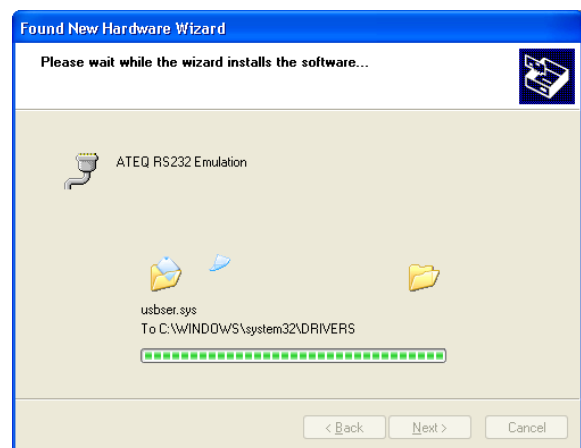
9) The installation begins...



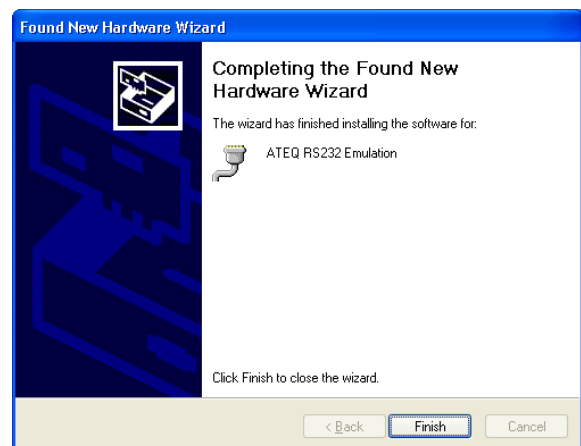
10) When this window appears, click on "Continue Anyway".



11) The drivers are installed.



12) The ATEQ device can communicate with the computer through the USB connector. Click on "Finish".





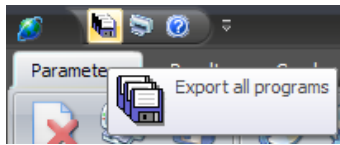
## Chapter 2

# NETWORKS AND GENERAL MANAGEMENT

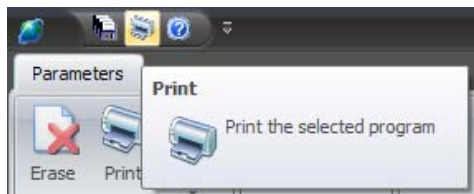
### 1. GENERAL MANAGEMENT MENUS

#### 1.1. TOP MENU

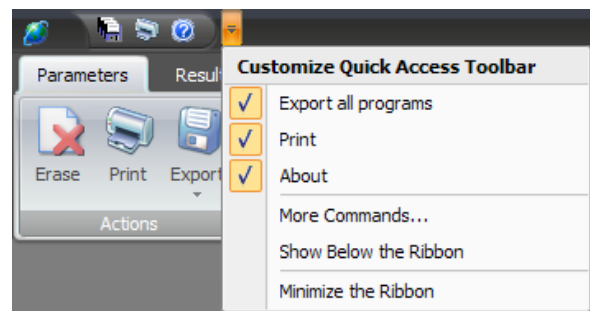
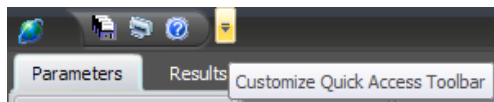
The "Top menu" located on the left up hand of the screen allows having quick access for some commands:



This icon allows saving all the test programs.



This icon allows printing the selected test program.

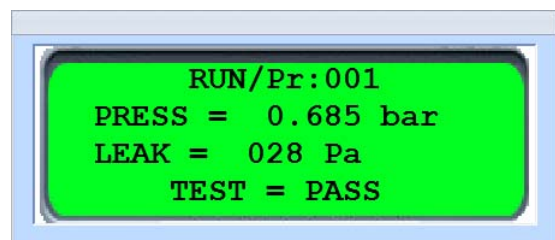


This menu allows to the user to customize the **Winateq300** software following its preferences.

In the all tabs is displayed the button "Show/Hide" by click on it, it will display the device screen. Depending of the devices series, this display may be different.



Example for **S6th** series.



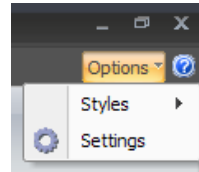
Example for **S5th** series.

### 1.2. DISPLAY OPTIONS

On the right up hand of the screen, the user can choose display options.

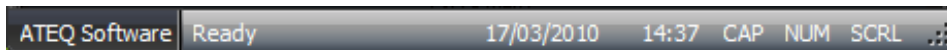
**Options / Styles:** to change the background software display colors, four models are available.

**Options / Settings:** to validate the screen definition when starting the software.



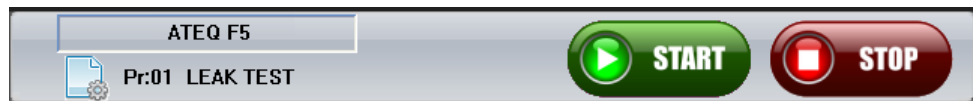
### 1.3. STATE BAR

The state bar located on the lower hand of the screen, gives more information on the software state.




### 1.4. BOTTOM BANNER

The bottom banner shows at each moment the current head state (selection by tab).



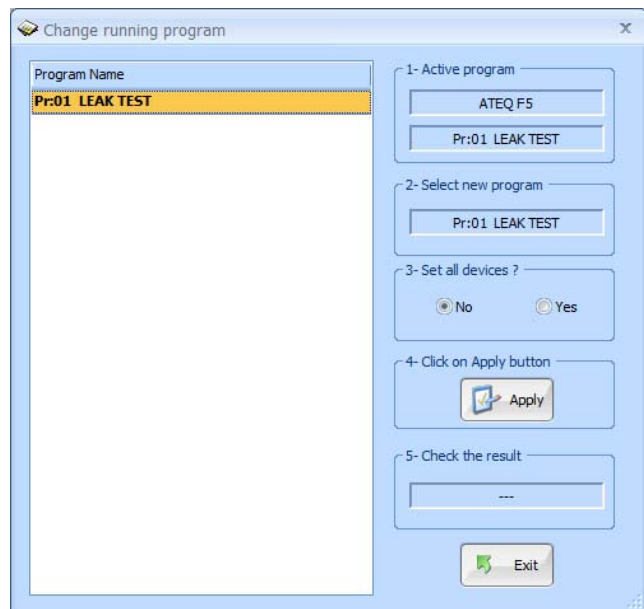
It is possible to carry on "Starts cycles" and "Reset" by using the two respective buttons.

The  button opens the management window of the current program (run program) of the head.

In this window is displayed the current program and the program to select. To select the new program, choose it in the list and click on the "Apply" button:

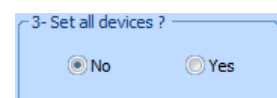


The option "Set all devices?" if it's validated by "Yes" allows selecting the same current program number on all the heads connected to the network.



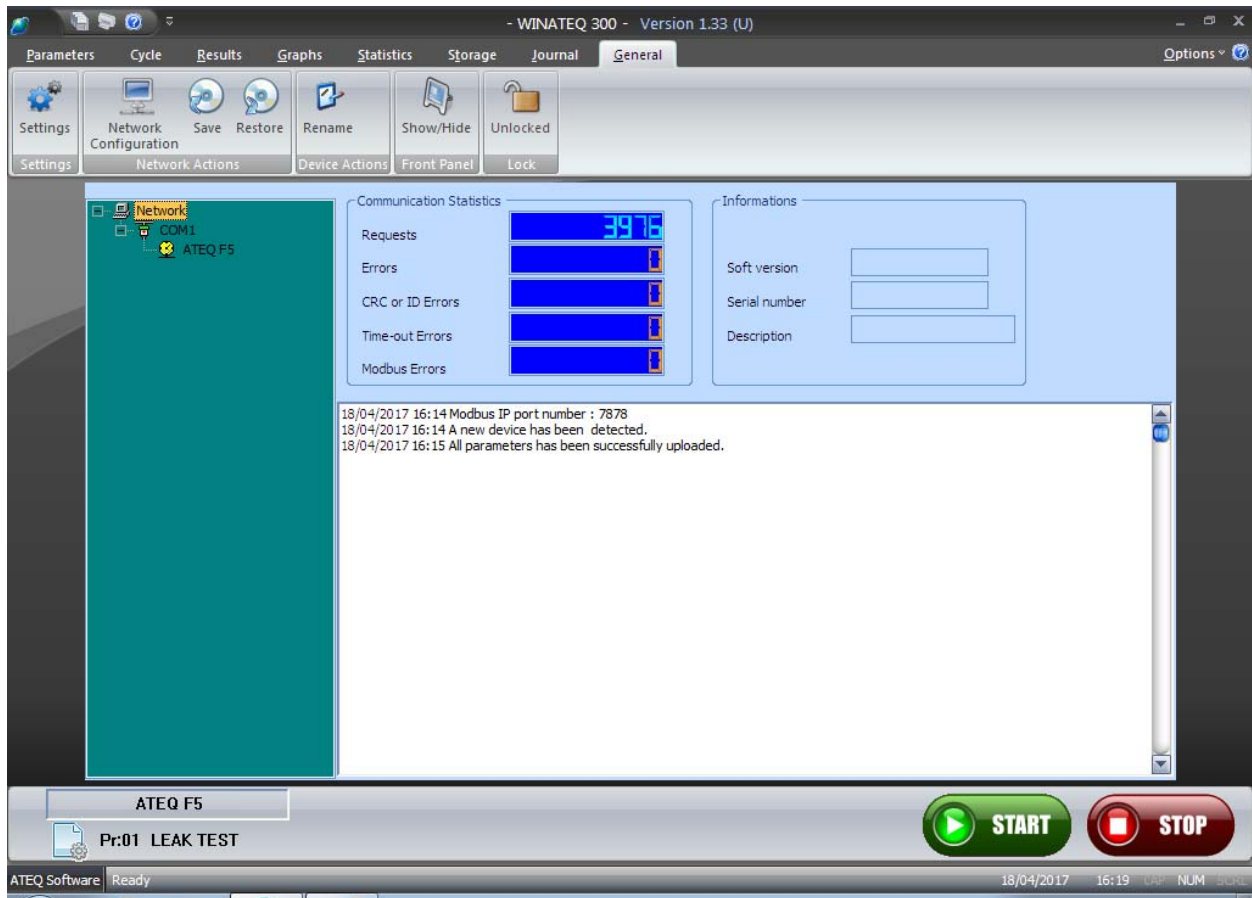
**Example:** the program **01** is selected in the "New program" field; the current program will be **01** for all the heads in the network.

The option by default is "No".



## 2. GENERAL TAB

The **Winateq300** is a tool that allows controlling, managing the network and configuring the test programs of the **ATEQ** device.

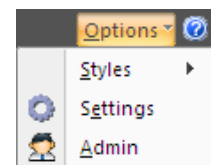


### 2.1. OPTIONS

This menu is available by clicking on the **"Settings"** button in the **"General"** tab.



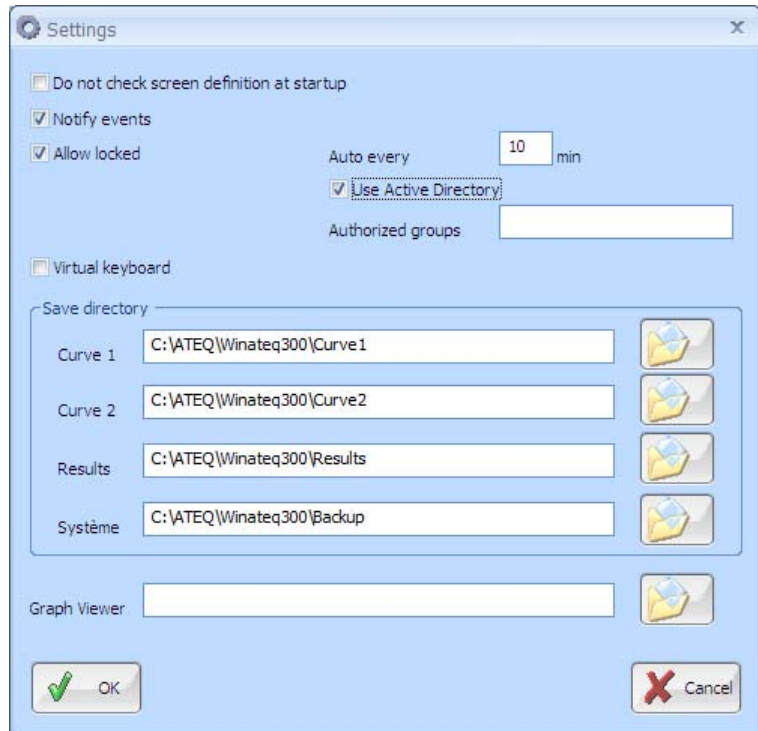
It's also available in the right hand up of the screen regardless of the tab by clicking on the **"Options/Settings"** menu.



### 2.1.1. Options / Parameters

This window is to configure some options of the **Winateq300** software.

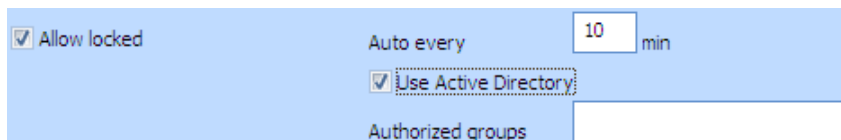
**Notify events** : this option when checked, allows to enable a "**Popup**" window (right hand bottom) for example :



**Do not check screen definition at startup** : to enable or not the screen definition at the software starting.

#### 2.1.1. 1) Locking the software

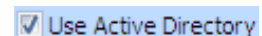
This paragraph will show how to configure the software locking to disable any modification by the operator.



To enable the software locking, check the "**Allow locked**" option.

The locking can be done following two means:

- 1) **Standard** locking with a local password.
- 2) Lock with the general network password in "**Active Directory**" mode, to unlock, you have to enter the network password which one the computer is connected. You have to inform the network group in the "**Authorized groups**" field. For further information, please contact your network administrator.



**Warning!** Before use the "**Active Directory**" mode, you must set a password in the **Standard** mode, this one becomes an administrator mode.

When the lock function is activated, a padlock with its state (open or close) appears in the **Winateq300** software menu.



**Locked**



**Unlocked**

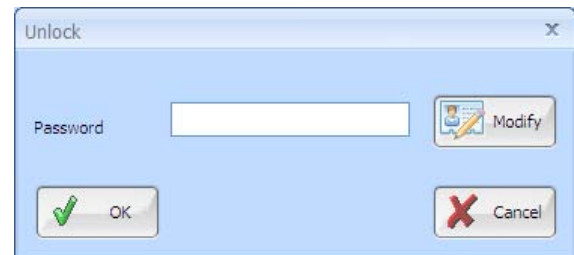
While the configured delay in the box "Auto every XXX min" is over, the station will be locked:



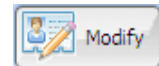
To unlock the station, click on the "Padlock" button and enter the password in the following window.



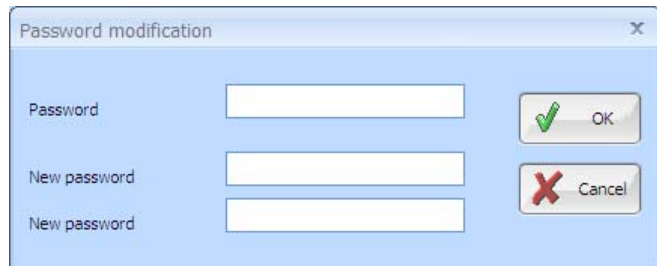
Password window with **Standard** lock.



In the **Standard** mode lock, in the password window, it's possible to modify the password with the "Modify" button.



Password change: enter the current password and then enter the new password in the two fields "New password" and "Confirm".



**Note:** if the current password is lost, it can be modified by using the following cancellation code: **2 8 3 7**.

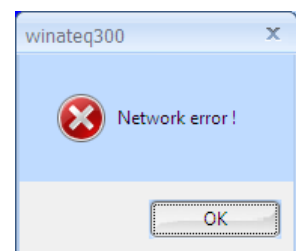
Password window with "Active Directory" lock.

**Note:** in "Active Directory" mode, the password can't be modified.



In "Active Directory" mode, if the network connection is failed, the lock mode becomes in **Standard** mode. A Network error message is displayed.

Once the network connection is restored, the "Active Directory" password becomes efficient.



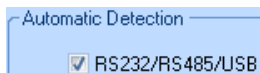
## 2.2. NETWORKS MANAGEMENT

### 2.2.1. Connections configuration

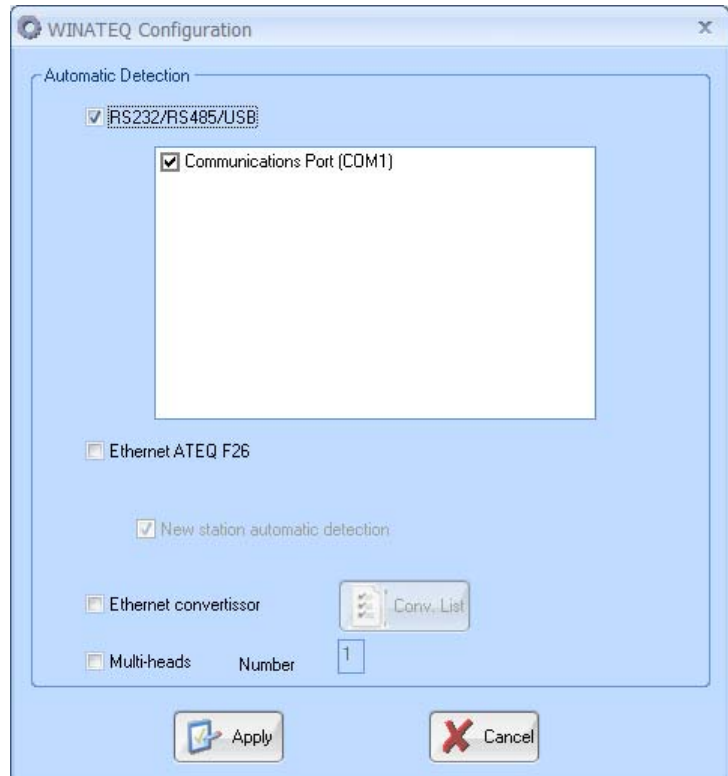
This task is done under the "General" tab.



The "Configuration" icon gives access to the **Winateq300** software configuration, this window appears:



This is to validate the automatic detection on the three kinds of supported links: RS232, RS485 and USB, when the software starts, it's recommended to validate this box.

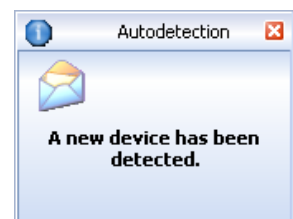


Communications Port (COM1) Allows the selection of one or several ports which detection will automatic (several ports can appear: COM1, COM3 etc.).

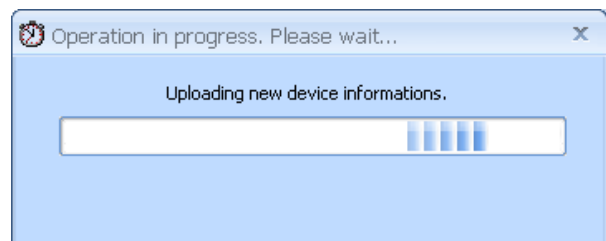
### 2.2.2. USB/RS232 connection

Connect the USB or the RS232 cable on the device and on the computer.

Turn on the **ATEQ** device, the detection is automatic; a message on the right down hand of the screen appears.



The device data are downloaded.



If no device is detected, check the connection; check if the **ATEQ** device is turn on, restart eventually the **Winateq300** software, and then restart the **ATEQ** device, if the problem persists, check the drivers' installation.

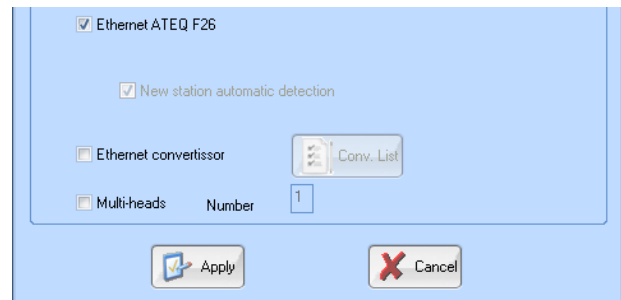
### 2.2.3. Ethernet connection (LAN)

**Important note:** to configure the device for the Ethernet network (TCP/IP) use the USB link.

When the device is configured and connected to the Ethernet network, the USB connection can be removed.

Validate the **"Ethernet"** box in the configuration menu.

Contact your corporate network administrator that will tell you the network Subnet Mask and the IP Address of the Gateway.



The IP addresses are entered in the **"Parameters"** main tab, then in the **"System settings"** tab of the selected device.

#### Corporate network configuration:

- **Automatic mode** (network server use):

Validate the **"Automatic IP"** box (recommended) in **" / Parameters / System settings /"**.

The device connected to the corporate network, will receive an IP address assigned by the **DHCP** server.

PARAMETERS	SYSTEM SETTINGS	CONFIGURATION
	Title	Value
	Dump Thres. :	<input type="checkbox"/>
	Input 5 :	None
	Input 6 :	None
	Handshake :	<input type="checkbox"/>
	Automatic IP:	<input checked="" type="checkbox"/>
	IP Address:	192.168.1.165
	Subnet Mask:	255.255.255.0
	Gateway:	192.168.1.252
	Mac Address:	0004A321686F

#### Independent network configuration:

If the network is alone and insulated, with a computer and several **ATEQ** devices connected on a **"Switch"** and without **DHCP** server, you must assign manually a unique IP address for each device and the computer:

Do not validate the **"Automatic IP"** box.

Enter **255.255.255.000** for the **"Subnet Mask"** and **192.168.1.255** for the **"Gateway"**.

Examples of devices and the computer IP addresses: **192.168.1.XXX** (XXX from **001** to **254**).

In the two types of network, when configured, connect the devices on the network by using the Ethernet connectors, the devices are automatically detected. The windows appear like the USB connection.



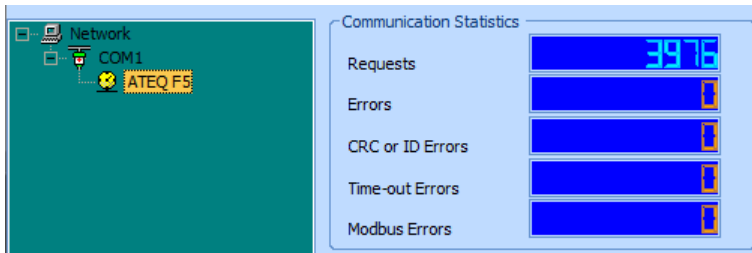
**Note:** for information, the ATEQ device Mac address always begins by 0004A3xxxxxx.

If no device is detected, check the Ethernet connection (switch turned on etc.); check if the **ATEQ** device is turn on, restart eventually the **Winateq300** software, and then restart the **ATEQ** device.

### 2.3. COMMUNICATION CHECK

The communication between the device and the computer can be checked.

Click on the "**General**" tab and in the displayed window, select the device on communication port, here **COM3** (USB) or **Ethernet** (LAN).

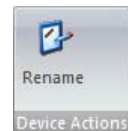


In the "**Requests**" field the number must grow quickly and regularly, the fields: "**Errors**", "**CRC or ID Errors**", "**Time-out Errors**" and "**Modbus Errors**" must not grow or only some rare times.

If there's not the above conditions, there's communication errors, check the connections and cables (USB) or Ethernet.

### 2.4. RENAME

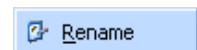
The "**Rename**" function allows giving a personalized name to the device. It is useful in case of several devices are connected to the network. This function is not available for all the device types.



Select the device to rename; click on "**Rename**" icon, the device field will be opened for typing a new name.



When "**Right click**" in the network window, the "**Rename**" menu appears which allows renaming too.



### 3. "CYCLE" TAB

This tab is to display all the devices which are connected to the network or to the computer.

Two display types are available, "**Standard display**" or "**Light display**" to select by following the user's preferences. The display type is made with the menu in the opposite example:

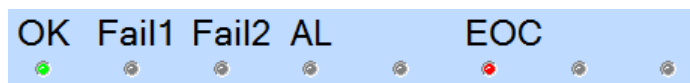


#### Standard display:

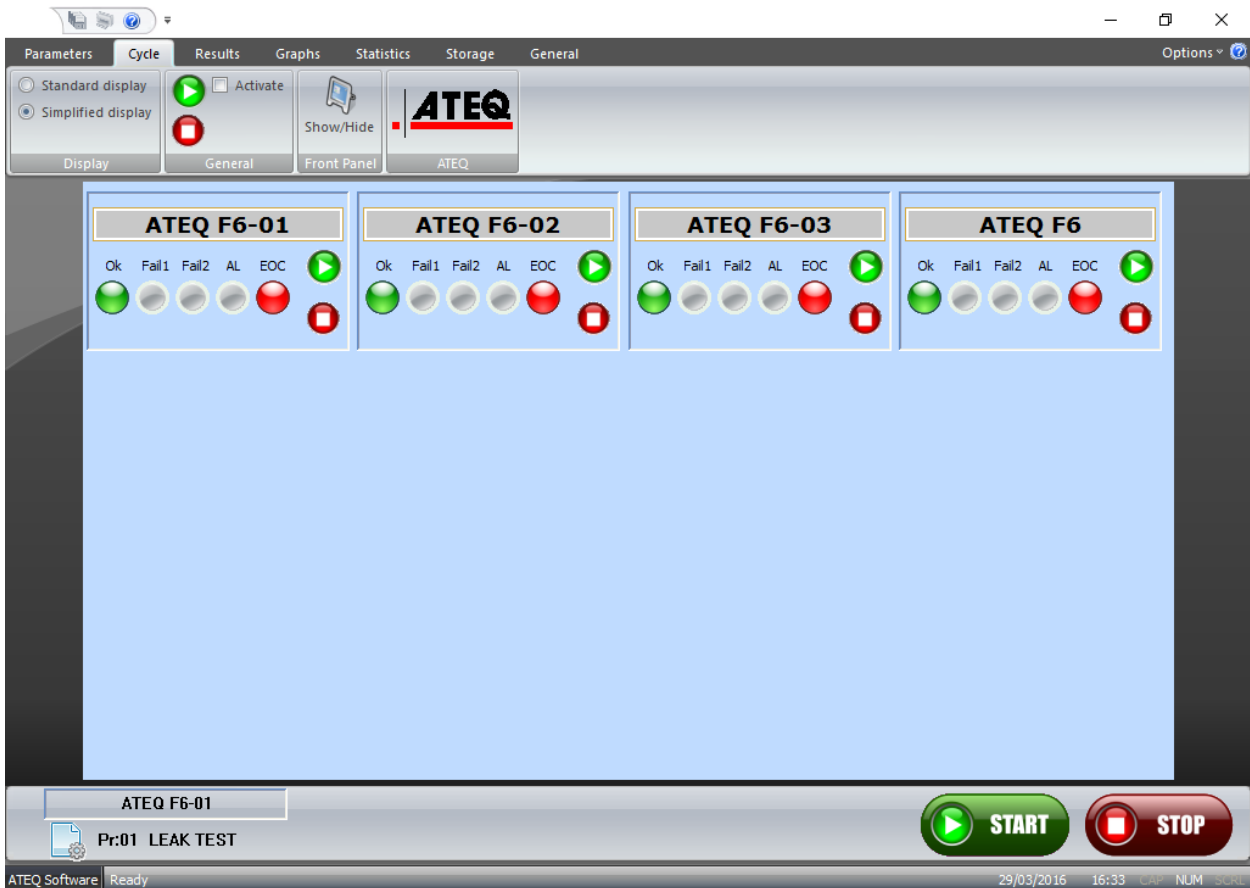


The lights in each device window give the state of the head.

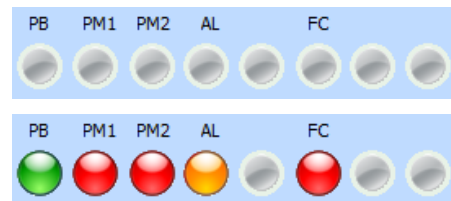
If several devices are installed into the network, they will be all displayed in this mode.



**Simplified display:**



The lights in each device window give the state of the head.



**Important note:** this display mode uses fewer communication resources, it is recommended if the computer is slow or if the network is overloaded or slow.

### 3.1. START CYCLE

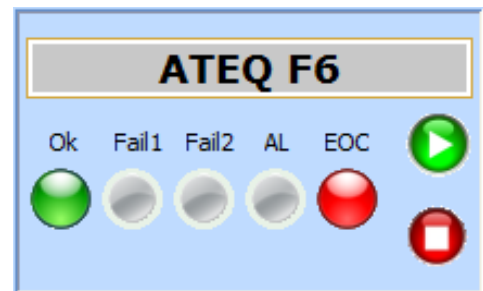
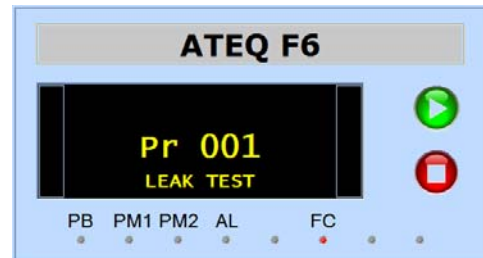
It's possible to give the start cycle (or reset) order to **all** the measurement heads simultaneously.

This command works **only in the Ethernet network** and o, the connected heads, detected and displayed in the **Winateq300** software.

In this tab, all the connected heads are displayed.

It's also possible to drive a start cycle on each head individually and knowing their states.

For all the heads connected with another mean, USB, RS232 etc. the start cycle is carried on only by this mode.



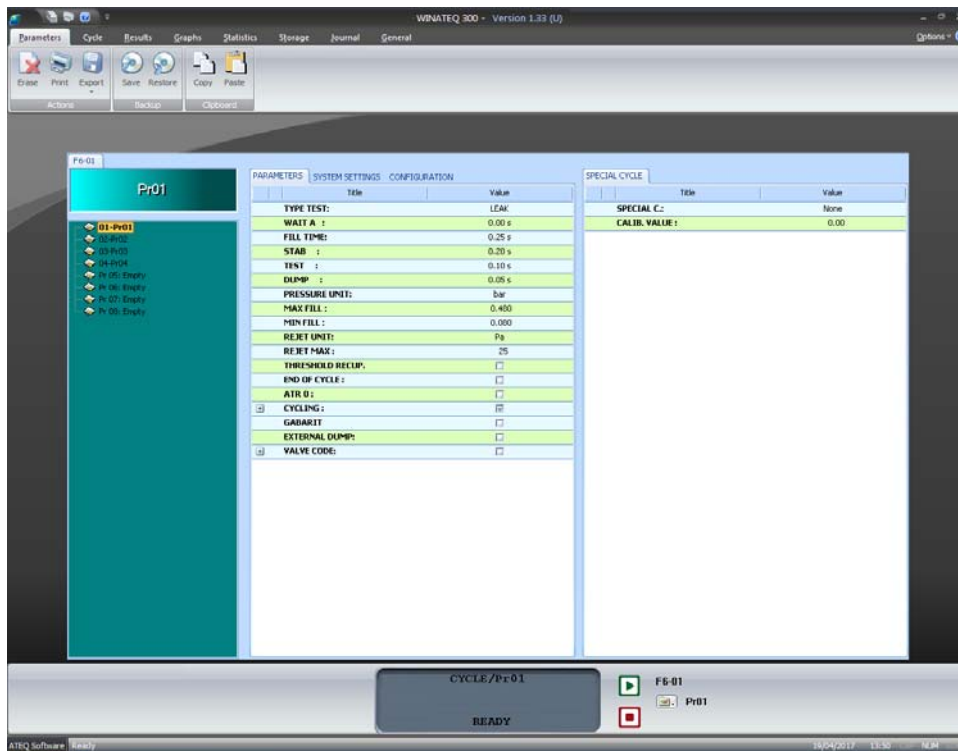


## Chapter 3

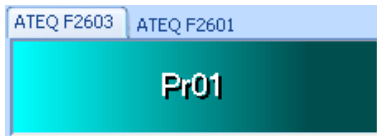
# TESTS PARAMETERS MANAGEMENT

### 1. "PARAMETERS" TAB

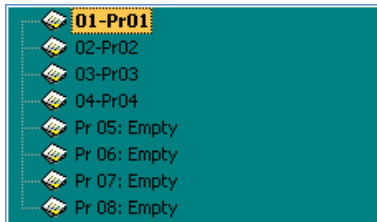
This tab allows managing until 128 tests parameters included in the **ATEQ** device, the program number according to the connected device.



### 1.1. WINDOW DETAILS



Name of the device connected (left up hand) and the selected program number or its name if created.



Program list window. The displayed program number is according to the device configuration.

Selected device state window:

PARAMETERS		SYSTEM SETTINGS	CONFIG
Title	Value		
<b>TYPE TEST:</b>	LEAK		
<b>WAIT A :</b>	0.00 s		
<b>FILL TIME:</b>	0.50 s		
<b>STAB :</b>	0.50 s		
<b>TEST :</b>	1.00 s		
<b>DUMP :</b>	0.00 s		
<b>PRESSURE UNIT:</b>	bar		
<b>MAX FILL :</b>	10.00		

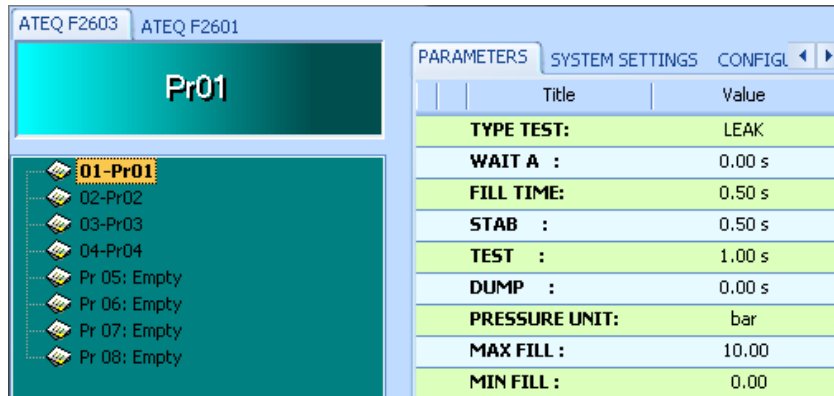
"PARAMETERS" tab displays the selected program parameters.

PARAMETERS		SYSTEM SETTINGS	CONFIGURATION
Title	Value		
<b>Dump Thres. :</b>	<input type="checkbox"/>		
<b>Input 5 :</b>	None		
<b>Input 6 :</b>	None		
<b>Handshake :</b>	<input type="checkbox"/>		
<b>Automatic IP:</b>	<input checked="" type="checkbox"/>		
<b>IP Address:</b>	192.168.1.165		
<b>Subnet Mask:</b>	255.255.255.0		
<b>Gateway:</b>	192.168.1.252		
<b>Mac Address:</b>	0004A321686F		

"SYSTEM SETTINGS" tab. To configure the ATEQ device especially the Ethernet link parameters (see chapter 2).

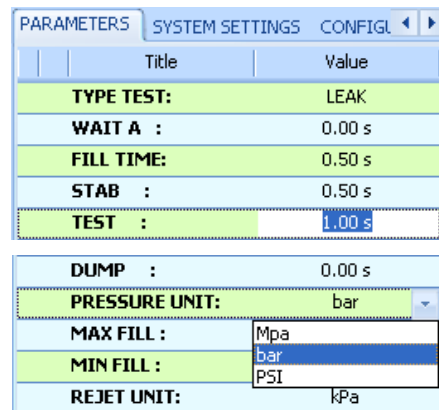
The "CONFIGURATION" tab is not available for the user.


## 1.2. PARAMETERS MODIFICATION



Select the program to modify in the left hand window. In the right hand window manage the tests parameters and the System settings. The configuration menu is not available.

Select the **"PARAMETERS"** tab. Click on the parameter to open the field and then modify it, type enter to validate.

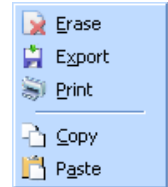


In some cases, the choice is among several items, click on the  key to make appear the options.

## 2. AVAILABLE COMMANDS DETAIL



By a "right click" in the programs windows, appears a menu with some directs commands on the selected program (Erase, Export, print, Copy, Paste).

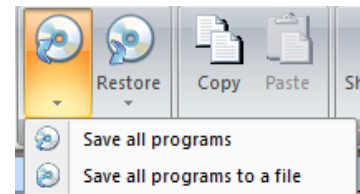


### Actions menu:

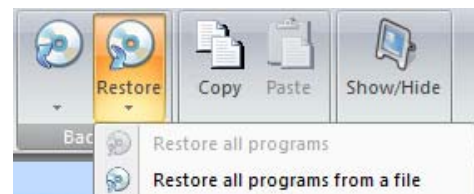
- ✓ **Erase:** delete the selected program.
- ✓ **Print:** print the selected program.
- ✓ **Export:** export in a text file format (.txt) the selected or all programs.

### Save menu:

- ✓ **Save all programs:** quick save on the computer hard drive all the parameters of the connected device.
- ✓ **Save all programs to a file:** to save in a file all the programs in the device, the software will ask you the name and the path of the file.



- ✓ **Restore:** quick upload of the parameters from the computer to the connected device (parameters saved from the "**Save all programs**" menu).



- ✓ **Restore all programs from a file:** to upload the parameters saved previously in the computer (parameters saved from the "**Save all programs from a file**" menu).

### Clipboard menu:

- ✓ To **Copy** the selected program into the clipboard to **Paste** the parameters into another program.



## Chapter 4

# RESULTS MANAGEMENT

## 1. PRESENTATION

**Winateq300** allows visualizing, managing and making some statistics with the measurements results.

Displaying and archiving the measurements results.

Displaying, saving and archiving the measurements curves of each part, in various files format.

Displaying and archiving the statistics on the measurement programs by programs since the last turn on of the **ATEQ** device.

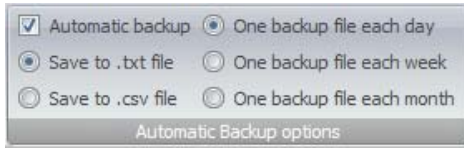
### 1.1. "RESULTS" TAB

This tab displays the 50 last measurements results.

N°	NAME	RUN PROGR...	RESULTS	LEAK =	LEAK UNIT	PRESSURE =	PRESSURE U...	ALARM	NUM. BAR C...	TIME
10		01	(AL)			-0.001	bar	PRESSURE L...		16:44:38
11		01	(OK)	020	Pa	0.687	bar			16:45:11
12		01	(OK)	006	Pa	0.754	bar			16:48:30
13		01	(OK)	002	Pa	0.754	bar			16:48:40
14		01	(AL)			0.738	bar	LARGE LEAK T		16:48:56
15		01	(OK)	008	Pa	0.752	bar			16:49:12
16		01	(OK)	007	Pa	0.752	bar			16:49:21
17		01	(OK)	024	Pa	0.751	bar			16:49:33
18		01	(TD)	052	Pa	0.750	bar			16:49:41
19		01	(OK)	014	Pa	0.751	bar			16:49:53
20		01	(OK)	014	Pa	0.752	bar			16:50:04
21		01	(OK)	009	Pa	0.752	bar			16:50:14
22		01	(OK)	006	Pa	0.704	bar			16:50:29
23		01	(OK)	040	Pa	0.702	bar			16:50:40
24		01	(OK)	029	Pa	0.704	bar			16:50:51
25		01	(TD)	065	Pa	0.704	bar			16:51:02
26		01	(OK)	013	Pa	0.704	bar			16:51:15
27		01	(OK)	006	Pa	0.658	bar			16:51:26
28		01	(OK)	012	Pa	0.647	bar			16:51:38
29		01	(OK)	014	Pa	0.641	bar			16:51:48
30		01	(TD)	051	Pa	0.629	bar			16:51:58
31		01	(OK)	005	Pa	0.629	bar			16:52:11

### 1.1.1. Results management

This is managing the tests results.



- ✓ **Automatic backup:** to save automatically the results in a file format chosen by the user (see below).
- ✓ **Save to .txt file:** to save the results in a text file format (.txt).
- ✓ **Save to .csv file:** to save the results in a spreadsheet compatible file format such as Excel ©.

- ✓ **One backup file each day:** to save the current day results in one file, at each date changing a new file is created. The file name will be on the following format:

**ATEQ F2602\_16Mar2010.txt or ATEQ F2602\_16Mar2010.csv.**

N°	DEVICE NAME	RUN PROG	RESULT	LEAK RESULT	LEAK UNIT	PRESS RESULT	PRESS UNIT	ALARM	DATE	TIME
1	ATEQ F2602	<01>	(OK)	9	Pa	0.355	bar		16/3/2010	9:32:48
2	ATEQ F2602	<01>	(OK)	8	Pa	0.353	bar		16/3/2010	9:32:49
3	ATEQ F2602	<01>	(OK)	8	Pa	0.351	bar		16/3/2010	9:32:50
4	ATEQ F2602	<01>	(OK)	7	Pa	0.354	bar		16/3/2010	9:32:51
5	ATEQ F2602	<01>	(OK)	8	Pa	0.354	bar		16/3/2010	9:32:51
6	ATEQ F2602	<01>	(OK)	7	Pa	0.354	bar		16/3/2010	9:32:52
7	ATEQ F2602	<01>	(OK)	7	Pa	0.354	bar		16/3/2010	9:32:53

- ✓ **One backup file each week:** to save the current week results in one file, at each week changing (Monday morning 0h00) a new file is created.

**ATEQ F2602\_Week3Mar2010.txt or ATEQ F2602\_Week3Mar2010.csv**

- ✓ **One backup file each month:** to save the current month results in one file at each month changing, at each month a new file is created.

**ATEQ F2602\_Mar2010.txt or ATEQ F2602\_Mar2010.csv**

**Note:** this archiving is according to the user's preferences for the later statistics treatment and the tests performed each day. The texts (.txt) files fields are separated by tabs, these for spreadsheets files (.csv) with semicolons.



Results number performed display.

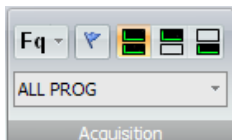
The "Results" column displays the last result of each measurements with the following explanations:

- (OK) pass part.
- (TD) fail part.
- (ALARM) alarm triggered during he measurement.

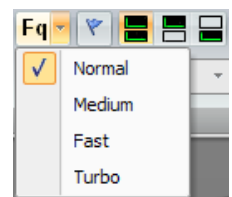
## 1.2. "GRAPHS" TAB

### 1.2.1. Display management

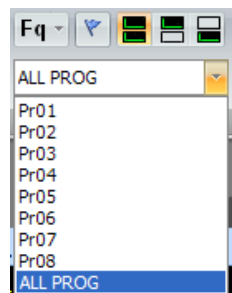
This tab is displaying in real time the pressure and leak measurements curves.



The user can choose to display two lines or one of the two, as well as displaying one program or all (that is to say the current program).

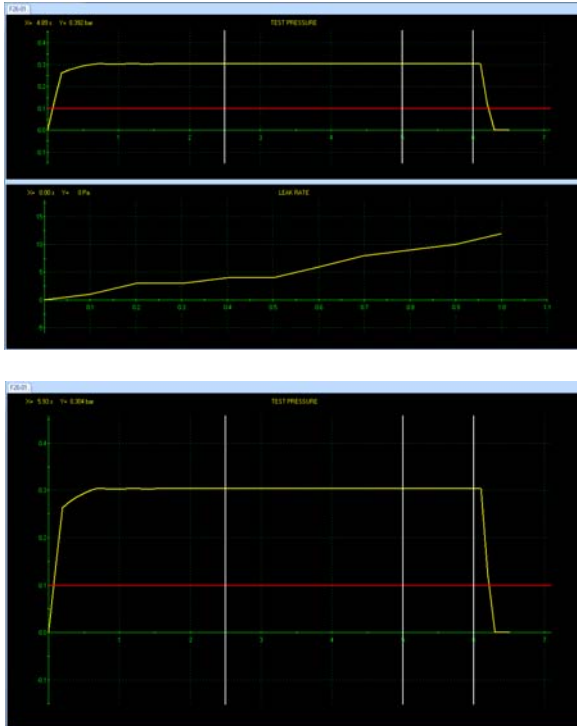



To select the results and curves acquisition curves. The usual operation is "Normal" mode. If the acquisitions are not corrects, change progressively with an upper speed: "Medium", "Fast" or "Turbo" in case of very short cycles.




To select the program which the curves acquisition will be performed.

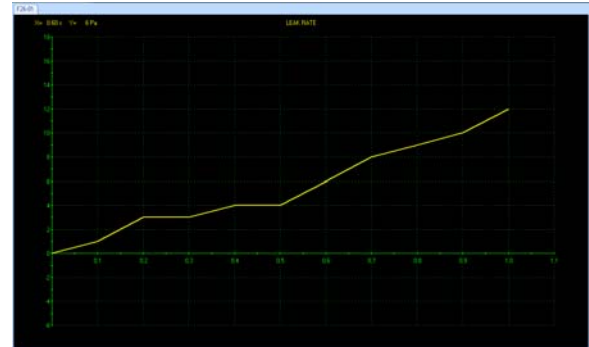
Display of one or the two curves:



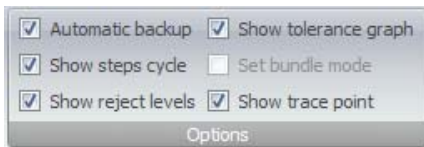
←  The two curves pressure and leak are displayed.

 Pressure curve only.  
↙

 Leak curve only.  
↓



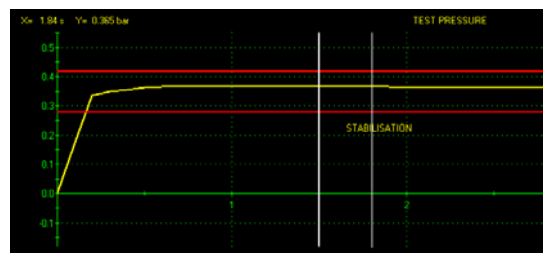
### 1.2.2. Curves option



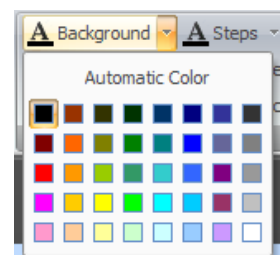
This menu is managing the curves display.

✓ **Automatic backup:** to validate the curves files archiving option. See paragraph "Archiving management".

- ✓ **Show steps cycle:** adds the vertical lines that delineate the cycle steps: fill, stabilization, test...
- ✓ **Show reject levels:** adds horizontal lines that represent the values of the maximum and minimum rejects levels.
- ✓ **Show tolerance graphs:** not functional.
- ✓ **Show trace point:** when flying over the curve with the mouse, a vertical line follows and displays the step overflow. Values (at the intersection of the curve and this line) are displayed in the top left hand of the curve.



To choose the displayed colors by the user preferences.



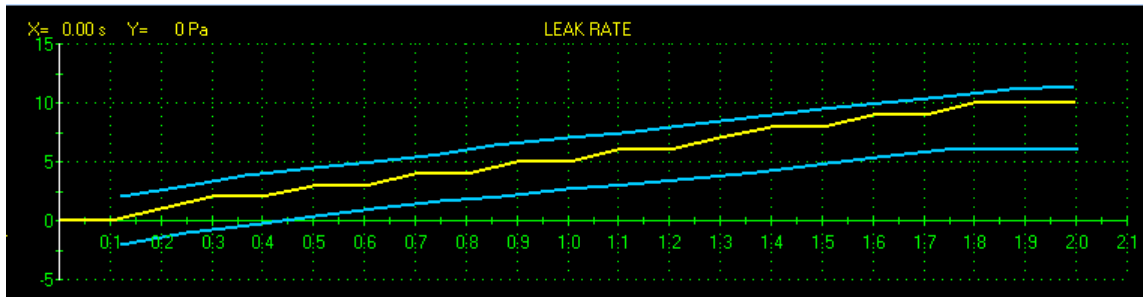
### 1.2.1. Tolerance curves

The "Tolerance curves" allows creating a sheath around each curve (pressure and leak) to carry on a monitoring during all the measurements.

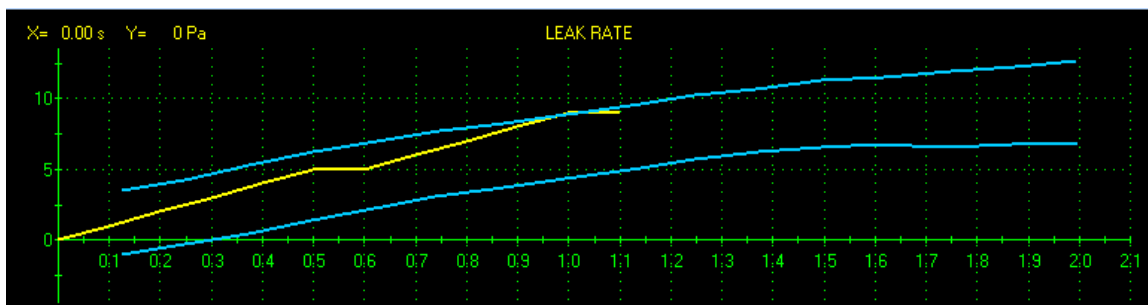
The created curve during the measurement must be between the maximum and minimum curves to be declared "Pass".

**Note:** this option is not available for all the devices, only for the last generation of **ATEQ** devices, in this case the icon is grey.

Example below with a pass part:



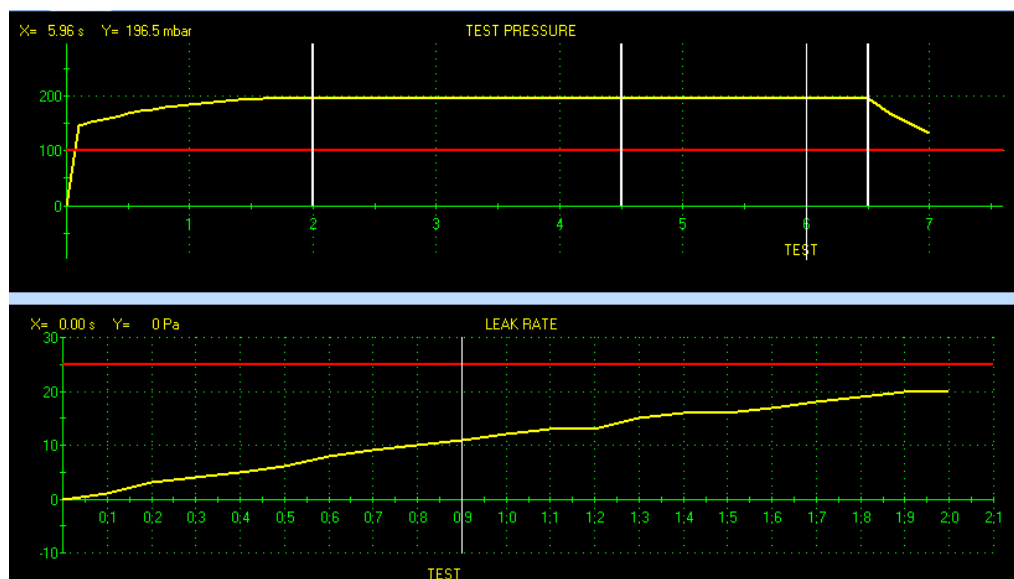
Example below with a fail part.



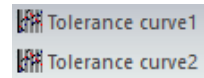
#### 1.2.1. 1) Tolerance curves installation

In first, carry on a test measurement with a pass part or a master. This is to have one or several curves with a pass part or the master characteristics.

The curves are displayed on the screen, pressure and leak curves.

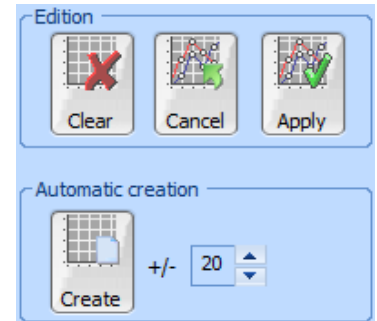
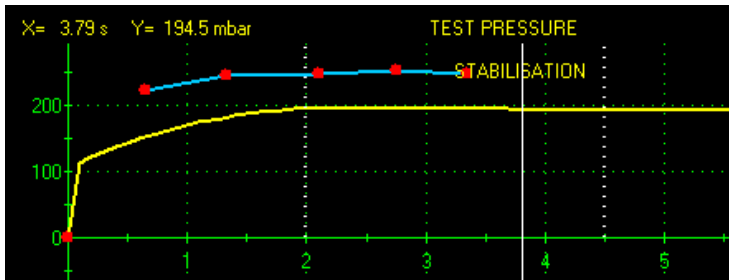


Click on the "Tolerance curve 1" button to draw the tolerance curve for the pressure measurements or on the "Tolerance curve 2" to draw the tolerance curve for the leak measurement.



The tolerance curves management window is displayed. There's **two** ways to draw the tolerance curves.

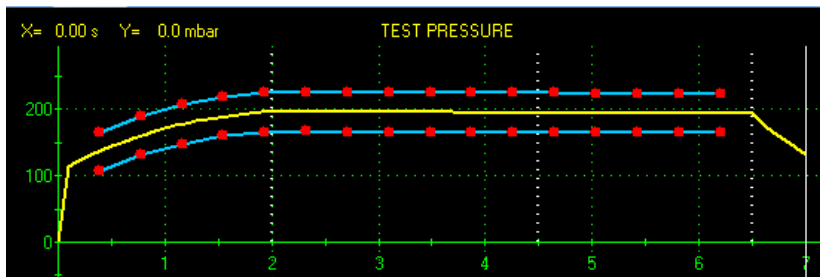
**1) Manual way:** with this way the user create the tolerance curves points by using the mouse pointer, click to add points on top or under the measurement curve.



X	Y
0.647	224.1
1.331	245.3
2.099	248.3
2.755	252.9
3.355	248.3

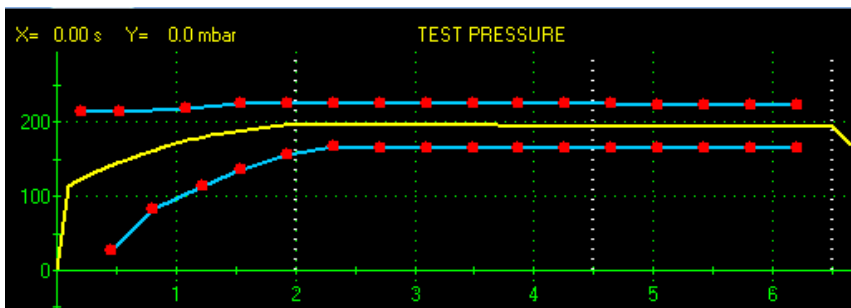
The value of each point is displayed in the windows "High tolerance" and "Low tolerance".

**2) Automatic way:** this way will calculate automatically the tolerance curves points. Choose the percentage value more and less (tolerance) around the measurement curve (default value +/- 10%) and then click on the button "Create". The tolerance curves are created around the measurement curve.



High tolerance		Low tolerance	
X	Y	X	Y
0.093	3.000	0.093	-3.000
0.186	3.857	0.186	-2.143
0.279	4.788	0.279	-1.214
0.371	5.715	0.371	-0.285
0.464	6.643	0.464	0.643
0.557	7.572	0.557	1.572
0.650	8.000	0.650	2.000
0.743	8.430	0.743	2.430
0.836	9.358	0.836	3.358
0.929	10.00	0.929	4.000
1.022	10.22	1.022	4.216
1.114	11.00	1.114	5.000
1.207	11.07	1.207	5.073
1.300	12.00	1.300	6.002

The value of each point is displayed in the windows "High tolerance" and "Low tolerance".

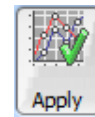
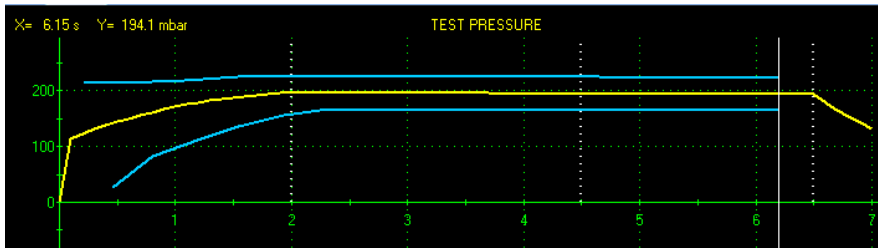


It's possible to modify the created points by using the mouse pointer, click and hold on the point and move it until the final location and release the mouse button.

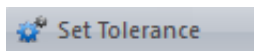
It's also possible to change the point value in the table, select the field of the value to change, press "Enter" key, enter the new value, and then press again the "Enter" key. The value is changed and the corresponding curve point is moved.

X	Y
0.093	3.000
0.186	3.857
0.279	4.788
0.371	5.715
0.464	6.643
0.557	7.572
0.650	8.000
0.743	8.430
0.836	9.358
0.929	10.00
1.022	10.22

Once all the points are created, for regardless the used mean (manual or automatic) press the "**Apply**" button to save the Tolerance curves and the modifications.

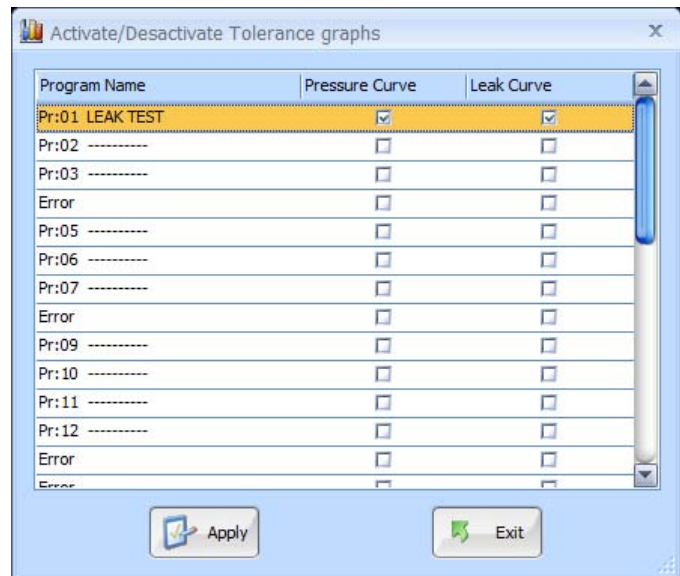


To validate the control with the tolerance curves, press on the "**Set tolerance**" button:



And then validate the control for the wished curve for the selected program.

**Example:** the pressure and leak tolerance curves are activated for the program #01.

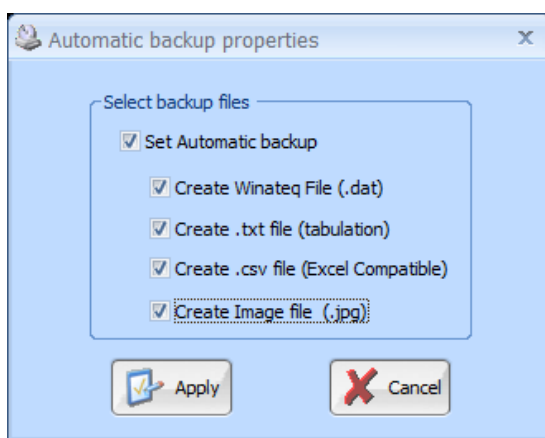
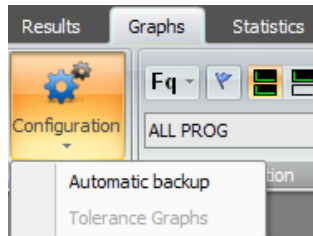
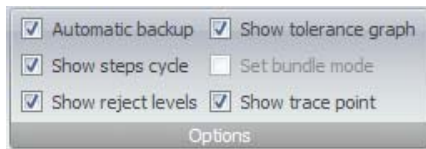


The validation of the tolerance curves can also be done in the program parameters in the functions tab with the names "**TOLERANCE PRESS**" et "**TOLERANCE LEAK**".

EXTENDED MENUS	
PARAMETERS	
Titre	Valeur
TOLERANCE PRESS	<input type="checkbox"/>
TOLERANCE LEAK	<input type="checkbox"/>

### 1.2.2. Archiving management

The curves or the results can be saved and archived on the computer hard drive.



To save automatically all the measurements curves, validate the "**Automatic backup**" function.

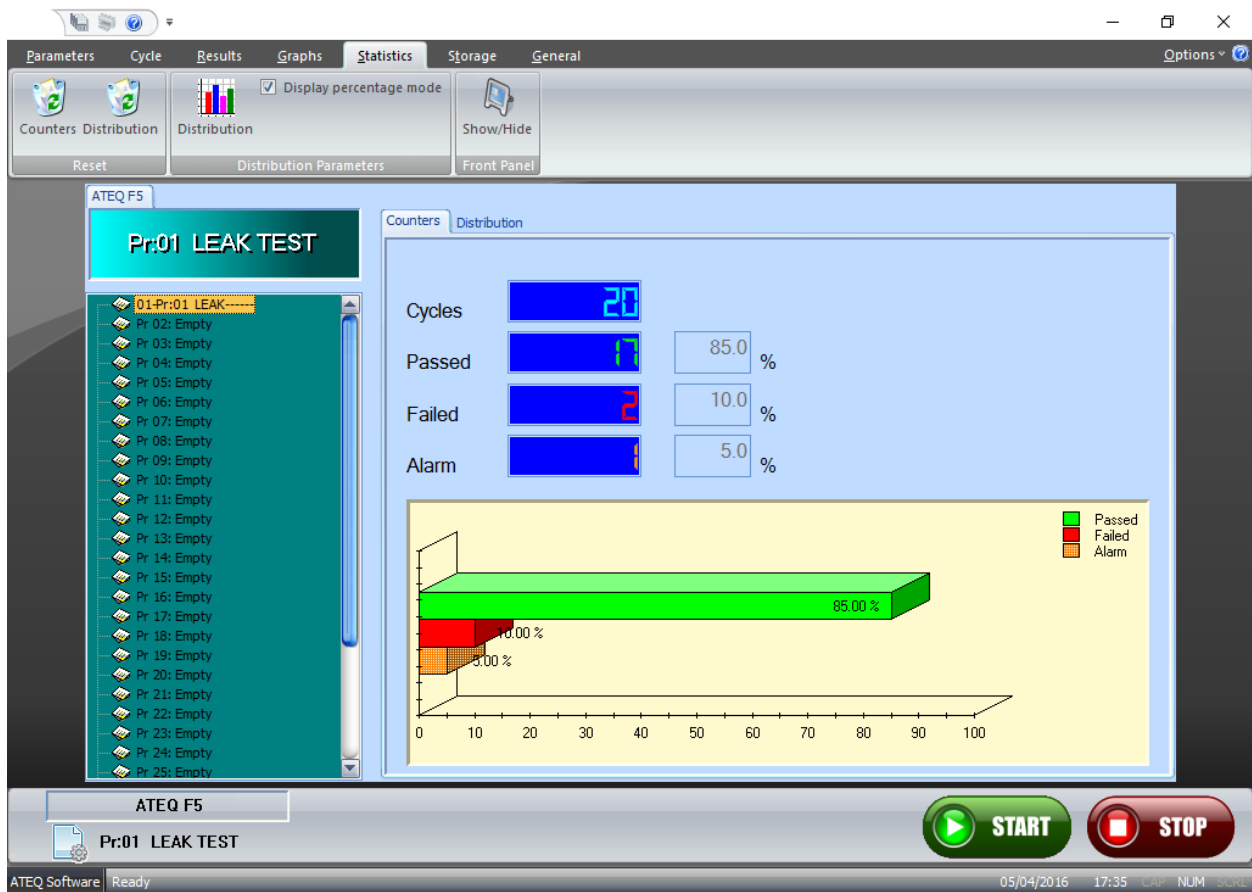
Then configure by selecting the "**Configuration/Automatic backup**" menu, the following menu appears:

Then validate the file format for archiving.

- ✓ Winateq property file (.dat) not functional (file created but can't be read at yet).
- ✓ Text (.txt) file which contains the curve points (time / pressure)
- ✓ Spreadsheet compatible file (Excel) same as text file, in different format (.csv).
- ✓ Picture file (.jpg) which represents the cure in graphic format (same as the screen).

### 1.3. "STATISTICS" TAB

#### 1.3.1. "Counters" tab

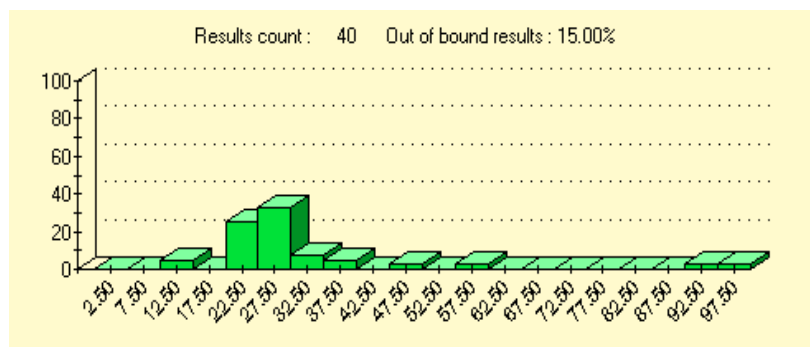


This window in "**Counters**" mode displays, program by program, the distribution of the pass parts, fails and alarms, it allows seeing the production quality.

#### 1.3.2. "Distribution" tab

In this tab are displayed the distribution of the measurement results (between the configured levels) for the concerned program since the last reset. The results are divided in 20 classes. Each class represent a twentieth ( $1/20^{\text{th}}$ ) of the difference between the minimum and the maximum level.

The display can be in percent or in value for the selected program since the last reset.

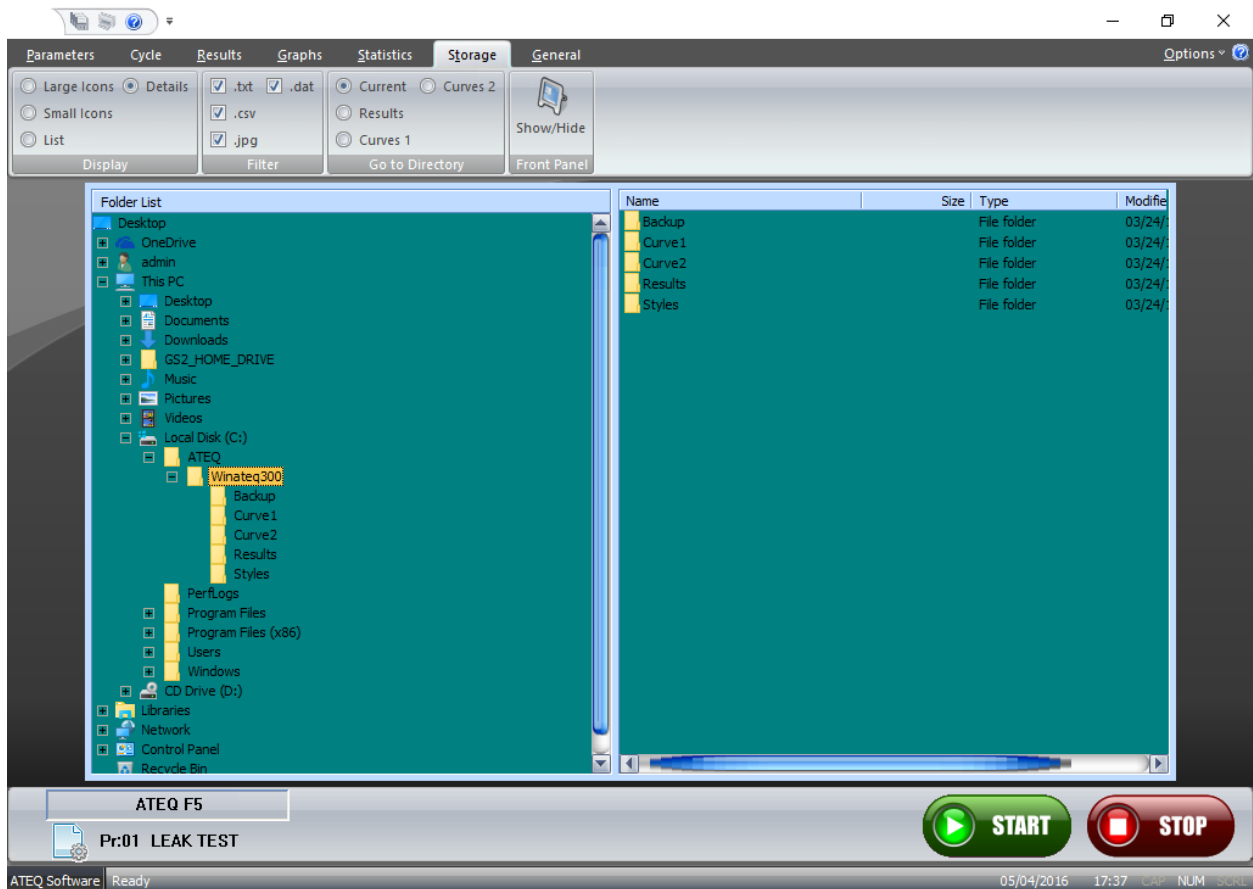


This function is not available for all the device types.

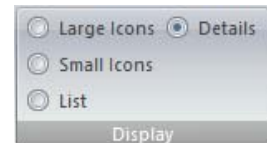
## 1.1. "STORAGE" TAB

The "Storage" tab displays a file explorer.

By using this explorer, it's possible, the **Windows® explorer** software to manage the files created by the Winateq300 software, like TXT or CSV results files, curves files, etc.



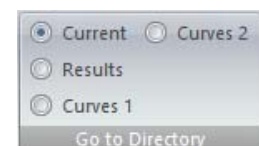
The "Display" menu changes the display mode of the files like the **Windows® Explorer** software, by following the user's preferences.



The "Filter" menu displays only the checked files.



The "Go to Directory" menu allows to jump directly to the selected folder where are the the corresponding files.

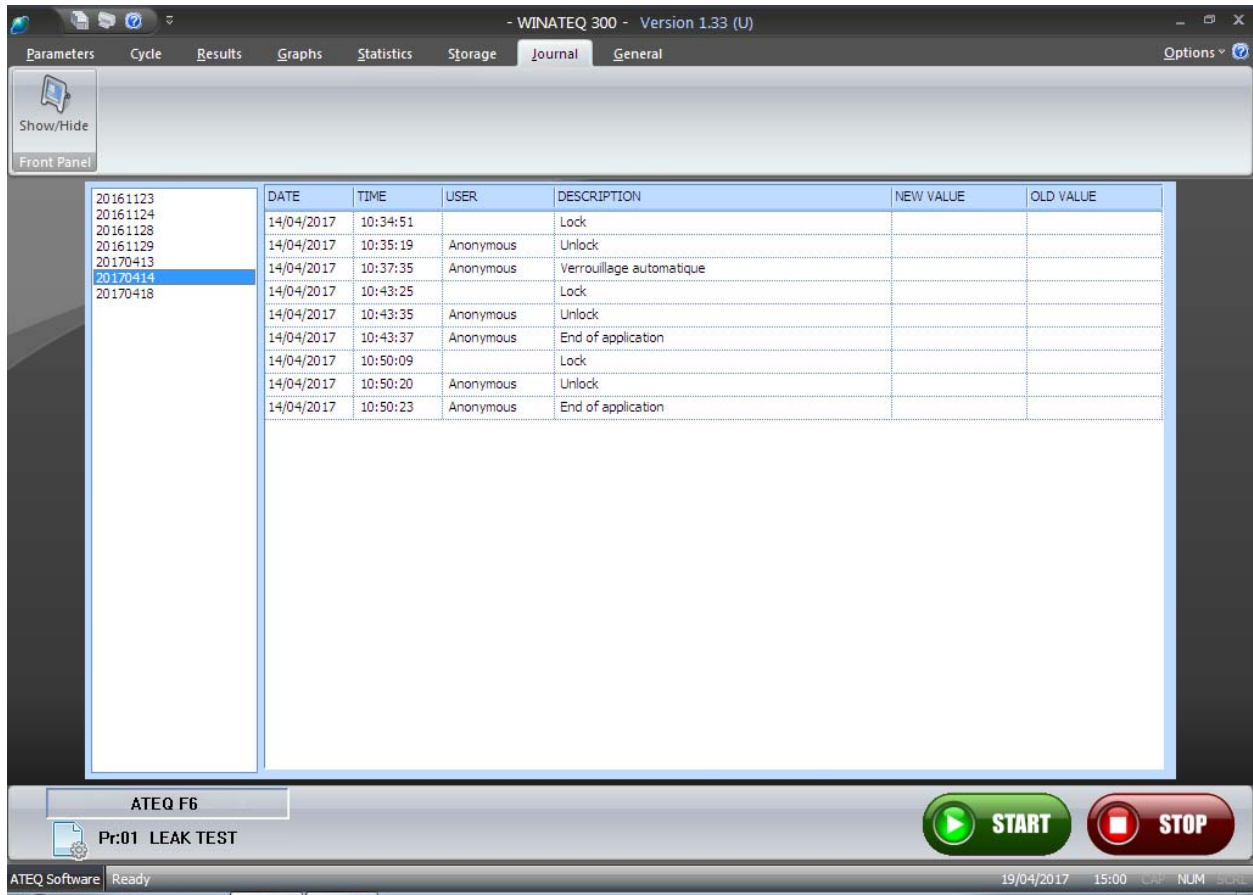


You can manage the files as the Windows® explorer software, open, move, delete, etc.

### 1.1. "JOURNAL" TAB

The **"Journal"** tab displays all the events or actions which are applied to one or several measurements heads connected to the Winateq300 software.

The events are sort by date, to display them, select the date on the left hand window.



**Note:** the **"Journal"** files are saved in .csv file format, with the name **YYYYMMDD.csv** in the folder **C:\ATEQ\Winateq300\Journal**





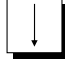
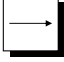
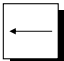
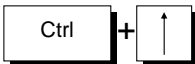
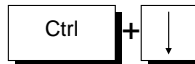
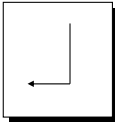


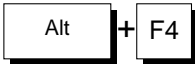
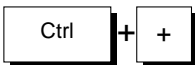


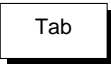
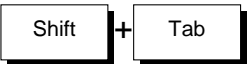
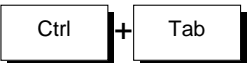
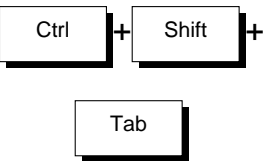

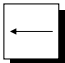
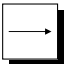
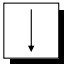
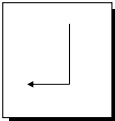
## Appendicies

### KEYBOARD SHORTCUTS

**Winateq300** disposes of a number of keyboard shortcuts (similar to those of the desktop explorer), which are presented in the table below.

Some of these shortcuts do not have an equivalent function in the menus.

KEY or COMBINATION	EFFECT
 (of the number pad)	Unfolds all the branches attached to a selected icon.
	Moves back up one level in the files tree.
	Moves down one level in the files tree.
 and 	Moves the highlighting between icons in the tree.
	Moves forward in the selected folder branch. Unfolds the branch if it is not open.
	Moves back up in the hierarchy of the selected folder. If the folder branch is deployed, it is folded back.
 and and 	Scrolls through the tree content.
	After the selection of an icon in the tree, loads the default application (the first in the tasks menu).
 (of the number pad)	Unfolds the branch of the selected folder.
 (of the number pad)	Folds away the branch of the selected folder.
	Closes the application window and allows the exiting from WINATEQ.
	Makes an automatic adjustment of the column widths.

	<p>Allows the access to the next functions.</p>
	<p>Allows the access to the preceding options.</p>
	<p>Allows the access to the next tabs.</p>
	<p>Allows the access to the preceding tabs.</p>
	<p>Activates the scrolling menus.  <i>(Choose one of the different menus by using the  and  keys, and when the desired menu is displayed, select the required command by using the  key, then validate with the  key).</i></p>

## Index

<b>A</b>		<b>N</b>	
About.....	3	Network tab.....	19
Active directory.....	14	New program.....	12
Archiving management.....	34	<b>O</b>	
Automatic save.....	34	Open a network.....	18
<b>B</b>		Open <b>Winatq300</b> .....	16
Basic operations tutorial.....	16	<b>P</b>	
Bottom banner.....	12	Parameters management.....	23
<b>C</b>		Parameters modification.....	25
Clipboard.....	26	Password.....	14
Communication port.....	18	Presentation (general).....	3
Configuration communication.....	16	Properties.....	18
Configuration system.....	13	<b>R</b>	
Configuration, PC.....	4	Rename device.....	18
Curves display.....	29	Restore parameters.....	26
Curves management.....	29	Results archiving.....	27
Curves options.....	30	Results files.....	28
curves tab.....	29	Results files names.....	28
Customize Quick access tool.....	11	Results management.....	27
<b>D</b>		Results tab.....	27
Daily files.....	28	Run program.....	12
Display.....	11, 13	<b>S</b>	
Display options.....	11	Save all programs.....	26
Distribution.....	35	Save parameters.....	26
Drivers installation.....	8	Setup diagram.....	4
<b>E</b>		Simplified display.....	20
Ethernet.....	17	Spreadsheet files.....	28
Ethernet connection.....	16	Standard display.....	19
Ethernet network.....	4	Start cycle.....	21
Ethernet network action.....	21	State bar.....	12
Explorer.....	36	Station.....	18
<b>F</b>		Statistic tab.....	35
File journal.....	37	Storage tab.....	36
Files format.....	34	Subnet mask.....	17
<b>G</b>		System settings.....	25
Gateway.....	17	<b>T</b>	
General start cycle.....	21	Tests parameters.....	23
General visualization.....	13	Text files.....	28
<b>I</b>		Tolerance curves.....	31
Installation of <b>Winatq300</b> .....	6	Top menu.....	11
IP addresses.....	17	Trial version.....	5
<b>J</b>		<b>U</b>	
Journal.....	37	Unlock.....	15
<b>K</b>		Unlocked key.....	5
Keyboard shortcuts.....	39	USB locking key.....	6
<b>L</b>		USB Network.....	4
License.....	5	<b>W</b>	
Lock.....	15	Weekly files.....	28
<b>M</b>		<b>Winatq300</b> functions.....	3
Monthly files.....	28		

