

We test, You produce.

# Ioniq 6SW

## LEAK DETECTOR FOR HIGH VOLUME PRODUCTION BATTERY POUCH CELL TESTING

On the basis of its well proven concept of production line QC Testers, ATEQ has developed a new leak tester designed for the specific requirements of high volume production of plastic parts. This instrument is used for the detection of localized moulding faults, insufficient membrane thickness, perforations, etc. This instrument has also proven to be effective on testing pouch battery cells.

The IONIQU is based on discharge current measurement and is able to detect defects up to of 10µm.

### Highlights

- 6 SIMULTANEOUS TEST CHANNELS
- DISPLAYS 6 CHANNELS
- FOR INDUSTRIAL & LABORATORY



### Applications

Battery pouch cells, plastic bottle caps, plastic packaging, plastic coverings...



# Ioniq 6SW

## LEAK DETECTOR FOR HIGH VOLUME PRODUCTION BATTERY POUCH CELL TESTING

### Measurement principle

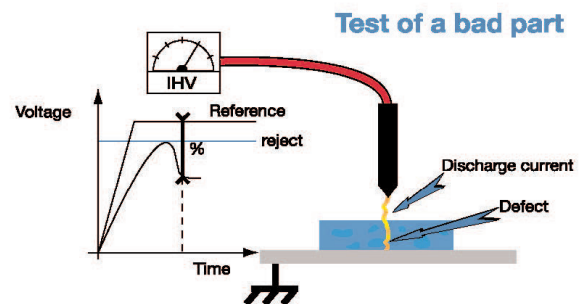
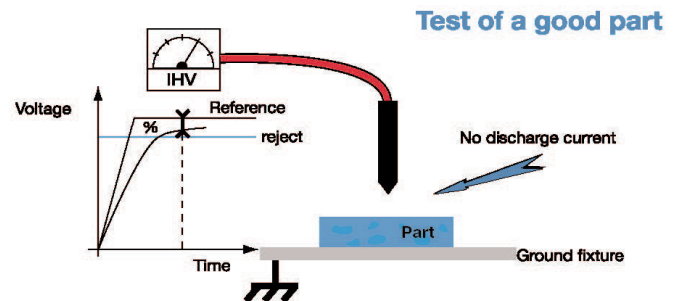
- The IONIQU measures the current flowing between a patented charged probe and a ground plate placed under the part to be tested.
- The IONIQU uses the % of the nominal voltage (which reflects the discharge current), measured on the part as PASS/FAIL level.
- **In a PASS situation (fig 1):** No hole, no weak part, the IONIQU measures a high %. The measured voltage and the nominal voltage are virtually equal. The result is above the reject level, the part has passed the test.
- **In a FAIL situation (fig 2):** The IONIQU measures a low %. The measured voltage is significantly below the nominal voltage. The result is below the reject level, the part has failed the test.
- Test limitations: short probe-part-plate distance, electrical insulation from environment.

### Main features

- Integrated ionising high voltage generator
- Integrated and adjustable according to application (5 to 27.3 kV)
- Reject levels as % of nominal voltage (0 to 100%)
- Monitoring and protection of high voltage generator
- Limitation of the current rating
- Speed: Minimum cycle time 0.6s
- I/O's for instrument control and results
- 32 programs
- Measuring box and remote control
- Timestamp, language selection, test customization

### Technique features

Temperature	Operating: + 10°C à + 45°C Storage: 0°C à + 60°C
Dimensions	<b>Instrument:</b> dimensions : H x L x P = 350 x 200 x 250 mm Weight: 9.4 kg <b>Remote control:</b> dimensions: H x L x P = 250 x 250 x 60 mm Weight: 2.8 kg
Power supply	90 V to 240 V AC Single phase: 50/60 Hz - 45 W Note: The instrument needs a good ground connection



Interfaces	Programming via remote control 7 inputs / 5 outputs for PLC controlled applications. <b>Inputs:</b> Optically isolated. 24 V - 10 mA maximum or dry contact. <b>Outputs:</b> Relay output Rated 48 V / 200 mA maximum.
Optional	Save results module Test charge one channel

